



Hot Topics



The Genesee County Medical Control Authority's

Newsletter for EMS Providers - Also now available on line at GCMCA.org

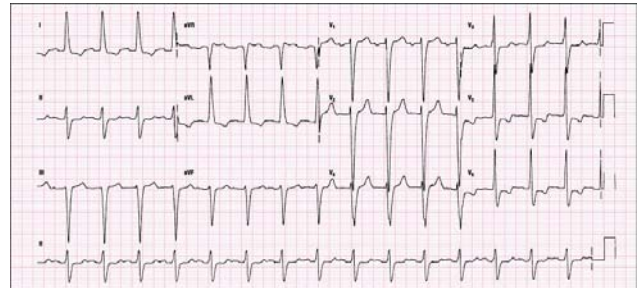
One Hurley Plaza, Flint 48503

Office Phone 810-262-2555

January 2019

New 12-lead Training & Testing Requirements

Starting in February there will be new 12-lead training and testing requirements for all paramedics. Beginning this year, February will really mean it is for the heart. All paramedics will be required to complete the American CME RACER 12-Lead program during that month each year. This easy to use system provides you with a series of 12-leads for your interpretation. Once you have successfully identified 30 EKGs the program is done, you receive a certificate, and 0.5 CEs. Medics can take it any time in the month of February and proof of completion must be provided to their agency.



In addition, beginning with those relicensing in March, we will have a new 12-lead refresher test. This test will have twenty EKGs that the medic must correctly identify from one of the five different options. The new test will no longer be a "yes/no" answer format. There will also be updated EKGs. Please feel free to contact us or your agency with additional questions.

MFR/BLS Naloxone Usage

The GCMCA PSRO recently completed a review of all MFR and BLS Naloxone usage since the state law went into effect allowing these levels to carry and administer the medication in October 2015. The study found that the medication was used on patients in true need of the intervention in 88% of the cases and that it was effective on 78% of the patients. While there is some room for improvement it shows the value of having the medication on MFR and BLS units.



The biggest area of concern was related to airway management. In nearly 28% of the cases airway management was not done at all and in more than 48% of cases airway management was not done BEFORE administration of Naloxone. While this medication has a significant impact on saving lives, the first step in the process is to ensure an adequate airway.

Just as a reminder, the protocol allows for the administration of the medication only AFTER these first steps in the protocol: 1) Ventilations have been established and patient has not regained consciousness; and 2) There is more than 1 rescuer on scene for personnel safety precautions. The protocol also reminds providers that the "treatment goal is to restore effective respirations; the patient need not be completely awakened," so make sure you titrate the medication to obtain successful respirations and avoid potential complications should the patient become fully awake.



Hidden Picture Contest!!

A few months ago the GCMCA created a new website, and now you have a chance to spend some time reviewing it. If you find the hidden picture embedded somewhere on our site you could win a \$10 gift card. Be the first person to contact us with a description of the hidden picture and you will win.