



Hot Topics



The Genesee County Medical Control Authority's

Newsletter for EMS Providers - Also now available online at GCMCA.org

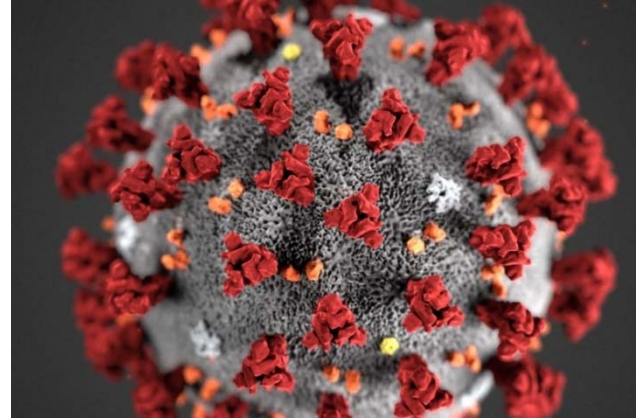
One Hurley Plaza, Flint 48503

Office Phone 810-262-2555

June 2020

COVID-19 Updates – Vigilance

While the quarantine efforts have had a huge impact on the number of confirmed cases in the county, the state, and the country, the disease is still very much present, and EMS crews need to remain vigilant when responding to medical calls. We are currently averaging 45 new, confirmed cases of the virus each week in Genesee County, and others are potentially infected who are pre-symptomatic or asymptomatic.



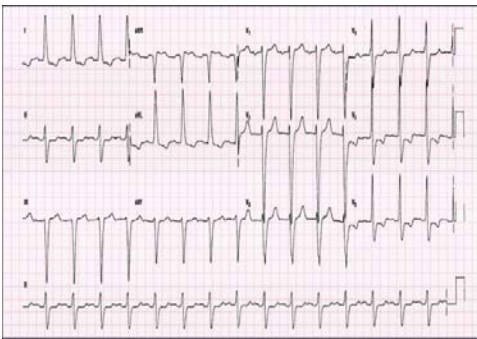
You all have faced some very challenging circumstances in a professional manner in the last few months and as a result the impact on our first response community has been relatively small. However, now more than ever you need to continue to be on guard to protect yourselves, other EMS providers, your patients, and members of the general community. Wearing masks, masking your patients, and using appropriate precautions should be standard practice, even in cases where no respiratory symptoms are present.

Testing should be available to you if you choose to take advantage. According to the current state guidance, first responders in medium to high risk areas (which we are in) are in the category for recommended weekly testing. If you are looking for a testing location our website can direct you to a location in the area.

Finally, while it can feel overwhelming, and many of you are feeling like you are “over this,” do your best to stay focused and prepared. Stay safe!

RACER Training Due

Traditionally we require that all paramedics complete the American CME RACER training annually in the month of February or face possible suspension until it is completed. Due to the current pandemic we did not strictly enforce that deadline, but now that the prevalence of the disease has lessened we are asking anyone who did not complete it in February to do so as soon as possible. If not completed by September 4th disciplinary action will be taken. Thank you for your assistance with meeting this continuing education requirement.



Mystery Picture Contest!!

If you can correctly identify the location of the picture below you could win a \$10 gift card. Be the first person to contact us with the correct answer and you will win.

(Hint: it is in Genesee County)

